

# FATHER'S DAY



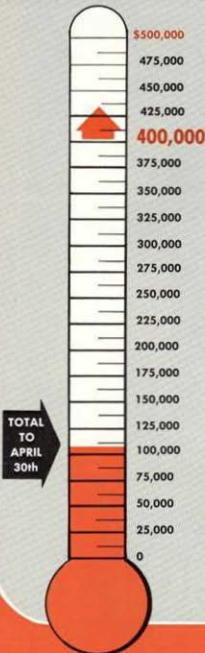
June 16th

WHEELABRATOR  
**Parade**

Vol. 16, No. 6

June, 1957

**PROFIT  
SHARING  
GOAL  
\$400,000  
PLUS**



**Profits**  
are generated  
by heat (energy)

**THE NEW LOOK IN PURCHASING**

This is the second in a series of articles by Wheelabrator people. This contribution comes from James Bostick of our Purchasing Department who has been with the Company since January, 1942. Jim has had many years of experience in this work, so should have some significant remarks for our consideration. PARADE welcomes contributions from other employees at any time.

"In modern business trends, Purchasing has become a definite part of Management. Purchasing can be a profit making tool, and should no longer be considered just a service department to production.

**In Front Line**

"The Purchasing Department could be considered as a front line of offense, maintaining excellent vendor relations, which pay dividends in the form of better delivery service and discount schedules... also in getting in on the ground floor in the development of new equipment which might have something to offer in the improvement of present methods.

"These days, in our effort to serve customer demands, production schedules change so rapidly that it upsets production planning, man power and

machines. Consequently, the purchasing agent is in an excellent position to liaison with engineering in standardizations and new product development. Purchasing should also maintain close liaison with the production department in helping to maintain quality, control inventory, establish economical buying points on purchase components and maintain an even flow of materials in accord with production requirements.

"Furthermore, in a machine tool industry such as ours, purchased items represent a high percentage of product cost.

**Working Together**

"Purchasing, with a knowledge of delivery schedules, can assist the Sales Department in good customer service. With Production and Purchasing Departments working together, it is then possible to give the Sales Department a more realistic picture for making sales commitments.

"In order to accomplish all this, the Purchasing Department must be sufficiently staffed with experienced purchasing agents, qualified to assume responsibility and make decisions intelligently. This will promote good relations with suppliers and customers alike."

**ON THE COVER**

June 16th is Father's Day for most men, but for Lloyd McCulloch nearly every day is "his" Mac works nights in the Steel Shop, which leaves him the logical choice to baby sit days while his wife is away on her job. He anticipates that he has a rough schedule with son, Bobby, with little time for himself. Upon seeing this picture, however, we're confused as to whether reading is a phase of the schedule. It appears, too, that Bobby is concerned as to just what kind of tale could drag Pop away from his duties.

**"It is a pleasure"**

This is a letter received recently by Howard Hull of Parts Service. It only goes to prove that all of us, in dealing with people, are making a distinct impression — good or bad. This letter proves, too, that all of us at Wheelabrator are salesmen.

"We wish to express our sincere thanks for the fine cooperation extended by you and the people at your plant the afternoon and night of April 19th.

"Needless to say, we appreciated your having all the parts we needed for our breakdown. Your watchmen and shipping men were most courteous and helpful. The man in the shipping room assisted in loading the shaft on top our car, which was a big help.

"It is a pleasure to do business with people like you."

Very truly yours,  
M. C. GODWIN,  
Asst. Supt.

Bostick Laundry Company  
Lafayette, Michigan

WHEELABRATOR  
**Parade**

Published for Employees of  
Wheelabrator Corporation  
Mishawaka, Indiana

Vol. 16, No. 8 — June, 1957  
Joseph Flory, Editor

# MINICH-PEAFF SCHOLARSHIP WINNERS NAMED

## Annual Grants Raised to \$900 Each

JAMES L. SHOWALTER has been selected by the Scholarship Committee of Purdue University as the winner of the VERNE E. MINICH "Founder" Scholarship. The University of Notre Dame Scholarship Committee has named EDWARD J. STRAUB as winner of the OTTO A. PEAFF Scholarship. This committee has also selected EMIL A. ZERNICK to fulfill an incomplete OTTO A. PEAFF Scholarship.

### Grants Increased

Especially important to the winners is the fact that the amount of each annual grant has been increased from \$750 to \$900. This now brings to eight the number of young people receiving a valuable education by virtue of the Scholarships.

## RECIPIENTS

JAMES SHOWALTER will enter Purdue in the fall to study Mechanical Engineering. EDWARD STRAUB, son of JOHN STRAUB, Chief Research Engineer, Dust & Fume Division, will enter the College of Commerce at Notre Dame in the fall semester. EMIL ZERNICK is already attending Notre Dame in the College of Engineering, and will work toward a degree in Mechanical Engineering.

### James L. Showalter

JAMES SHOWALTER has been working in our Dust & Fume Laboratory for the past eight months. He is a 1956 graduate of Mishawaka High School where he majored in Pre-engineering. He lives at R. R. 2, Box 62400, Mishawaka.

While in high school, Jim was a member of the Engineering Club and President of the Science Club. He was President of Hi-Y Club during his Junior year and Vice President in his Senior year. He served also as Vice President of County Hi-Y — Tri-Hi-Y Council.

In his Junior year Jim was on the staff of the MISKODEED. He was also on the Honor Roll, a member of National Honor Society and a Junior Rotarian. He was a 4-H Club member for 7 years. Although



JAMES L. SHOWALTER



EDWARD J. STRAUB



EMIL A. ZERNICK

he had no time to participate in high school sports, Jim enjoys all sports and likes to play basketball.

### Edward J. Straub

EDWARD STRAUB is a 1957 graduate of St. Joseph's High School, South Bend, where he followed the Academic Course. He lives with his parents, Mr. and Mrs. JOHN STRAUB, 2508 Lincoln Way West, South Bend.

Ed was a member of the Student Council of St. Joseph's for two years. He was also a Junior Rotarian, and participated in Junior Achievement activities, being associated with Provincial Products Co.

Ed displays a fine talent in a number of fields. He is a magician of equine ability, following closely in the path of his father who has been proficient in this line for many years. Ed is assisted in this activity by his sister, Dorothy. He is also a musi-

cion, playing the piano and clarinet. Ed directs a small dance band known as "THE FIVE."

### Emil A. Zernick

EMIL ZERNICK graduated from St. Joseph's High School, South Bend, in 1955. He has just completed his Sophomore year at Notre Dame. He lives with his parents, Mr. and Mrs. Emil Zernick, Sr., 703 West Calvert Street, South Bend.

During the last summer vacation and Christmas Holidays, Emil worked in our Dust & Fume Laboratory. He majored in Pre-engineering at St. Joseph's and graduated with high honors.

While in high school, Emil won two letters in baseball and two in football. He was a first baseman on the baseball team and played guard in football.

Emil is presently enrolled in the R. O. T. C. program at Notre Dame.



## IMRE FINDS LOVE AND PEACE

Imre Bodical has found a new home, new parents and the security so long missing in his young life — and Mr. and Mrs. Charles Ludwig have taken to their hearts a new son. Charles is District Manager of our Buffalo Sales Office.

### Freedom Fighter

To appreciate just how happy this lad must be, we go back several months to the bloody days in Budapest and the valiant fight put up by freedom loving Hungarians of all ages. Fourteen-year-old Imre was a member of the resistance movement organized among high school and college students. His mother had died when he was two, and only a short time before leaving Hungary he had seen his father die in the battle for Budapest.

Then came the day when he was hit in one leg by a bullet and in the other by shrapnel. The shrapnel was removed, but the bullet is still with him. A doctor, with no anesthetic available, had tried to remove the bullet, but gave up when the boy in agony begged him to forget it. His companions had to carry him much of the way on their fighting retreat to the Austrian border.

### Uncle in Vienna

Imre's nearest relative was an uncle in Vienna, and it was through him that the path opened to a better life for the young orphan. This uncle contacted Rev. Eugene F. Molnar, Pastor of Magyar Presbyterian Church. Lack-

awanna, New York, who in turn called Rev. Fred Webber, Pastor of Hamburg Presbyterian Church, near the Ludwig home. This congregation had already sponsored eight Hungarians so they were asked if still another could be taken care of. Mrs. Webber then mentioned the matter to Mrs. Ludwig, and the result was as we have referred to in the beginning of this story.

### Intelligent Youth

The Ludwigs have devised a way to help Imre learn English. They use cards, each with a picture, a Hungarian word and an English word, to hasten his association with our language. Besides high school, he is also attending a special night class in English.

Imre's record as a student in Hungary is very good. He shows a liking for mathematics and chemistry. He likes chess, is a good swimmer and was boxing champion of his old school. His new father is also acquainting him with the fundamentals of engineering.

Besides Imre, who incidentally wants to be called Jimmy, the Ludwigs have another adopted son, Marc, aged three and one half. Little Marc, when told that a big brother would come to live with them, remarked: "I will tell him I love him." We know, too, that this is the sentiment of Charles and his wife — and that the same feelings are returned by Jimmy.

This picture of the Ludwig family was taken recently when they visited Mishawaka.

## Points on PROFIT SHARING

- Q. What if I become eligible for the Plan before the end of any year — do I have to wait until the end to participate?
- A. You don't have to wait until end of calendar year. You may join the Plan after one year's continuous service, and then become eligible to participate from and after your next pay day following this period of service.
- Q. Just how do I go about joining the Plan after I am eligible?
- A. You simply sign an application for participation and an acceptance of the Trust Agreement. You can obtain this application form at the Personnel Office.
- Q. What if I leave the Company and then come back at a later date to work again — may I join again?
- A. You may join again upon completion of one year's continuous service after being reemployed.

### Q. Just what is the meaning of Trust Fund?

- A. The Trust Fund is the total of all money and investments, accumulated under the Trust Plan, and held in trust for the sole benefit of all employees who join the Plan.

### Q. When does the Company make payments to the Trust Fund?

- A. Once a year — not later than sixty days after the end of the previous year.

### Q. In case I do not retire at age 65 can I go on making payments into the Plan — and share in the Trust Fund?

- A. Yes.

## get ready to dance!

Remember—don't forget to reserve the night of Saturday, June 22 if you want to kick your troubles away. That's the night of the big dance sponsored by the Julianna Club at the Laurel Club in South Bend. The Laurel Club is at the corner of Laurel and Thomas Streets on the near west side of South Bend. Eddie Kay and his boys will hold sway with just the right kind of music from 9 until 12.



## VACATION WITH THE SMALL FRY

Should you take the kids along on that vacation this year? YES — if you plan it right — they need not be an ordeal.

Children should be attired in cool, easily-washed clothing. Shorts, jeans, T-shirts or wrinkle-resistant blouses are ideal. To keep healthy and comfortable, they should eat in clean res-

taurants and drink only from approved water supplies. Because of the lack of exercise due to riding, it is often wise to cut down to two full meals a day, but keep plenty of fresh fruit on hand for snacks. Overindulgence in candy and other sweets should not be permitted. A thermos jug of water, pasteurized milk or chocolate will be appreciated.

### Plan for Baby

The baby's formula should never be casted in a thermos just as it cannot be sterilized and is an ideal place for bacteria to thrive. If the trip is a short one, the formula can be poured into sterilized bottles and capped, then placed in the refrigerator until cold. Pack the bottles in a bucket of ice to take in the car. Canned milk or formulas, sterilized and capped nursing bottles can be obtained at most restaurants and each individual formula can be mixed in the bottle as needed. On longer trips, bottles will have to be boiled along the route each day.

### Entertainment Important

Fear the fact that children cannot sit still for long periods of time. A stop for a stretch every two hours should make them more contented riders, especially if they can play some active game, such as ping or baseball. Create automobile games for the youngsters to occupy their minds. During the ride, children can be interested in such games as counting out-of-state licenses or spotting birds and animals.

A piece of board can serve as a drawing table and a small bag filled with miniature toys can keep the little ones happy. Word games are fun and educational. They may include spelling games, guessing games, etc. Passengers can be divided into teams, but don't distract the driver. Children who are not allowed to become bored seldom become mischievous and irritating.

### Safety

Children riding in the rear seat should be warned that door handles are not for play. An adult or older child should ride in the back if possible, or any one of a number of safety locks on the market should keep doors closed on the way.

Place reasonable limits on your driving each day. Start early in the morning and be off the road by 5 P.M. Children who travel should be in bed by 8 P.M.

Family travel can be a rich and rewarding experience for members to share in the years ahead. Careful planning can make the vacation enjoyable for both children and adults and leave everyone with pleasant memories.

## IN THE SPIRIT OF HELPFULNESS

This is the kind of letter which makes all of us feel good. It proves too, that when you have a satisfied customer, they will go to great lengths to return a favor. Here is just a portion of the letter received recently:

"Our very good friends, the Standard Foundry Company of this city are in need of good casing cleaning equipment.

"They do not need as large a unit as we have as they are smaller. However, we would like for you to contact these people when you have an engineer in this area to go over their needs.

"We are writing this to you in the spirit of helping other worth while foundrymen, as you have already given us a leg-up, and made it possible for us to compete in the market, without increasing cleaning costs."

Yours truly,  
F. O. GOBMAN

The German Company,  
Wisconsin, Milwaukee

## STOCKROOM TOP BOWLERS

The Wheelabrator Bowling League ended their season May 7 with Stockroom taking top honors. Here is how they finished:

	Won	Lost
Stockroom	89	51
Steel Shop	81	59
Machine Shop	77½	62½
Engineers	62	78
Maintenance	62	78
Office	48½	91½

### Home Employment

Those ads offering work that can be done at home often result in disappointment and even loss of money for those who answer them. Here is an explanation of how such exploitative schemes are operated. For "Facts You Should Know About Earn-Money-at-Home Schemes," write to National Better Business Bureau, Inc., Chrysler Building, New York, New York. Price 10 cents.

"Liberty is never safe except where the average man feels resentful toward every oppressive act of government, whether it affects him directly or not." — THOMAS NIXON CARYER

### Tolerance

A man really doesn't believe in free speech unless he listens while the opposition speaks.

### Wheelabrator Folks on the Job



JOHN TROJAN, Maintenance, started to work here on January 20, 1946. He came directly from the Army where he had served several years. He has worked in the same department since coming here. John is married. As he spends some activities, he combines most of it to hunting and fishing.

# The Passing Parade

## PARADE REPORTERS



**HILDRETH BOEHNLEIN**  
Machine Shop — Stock Room



**FLORENCE DUNCAN**  
Office — Engineering (Downstairs)



**MARIE MENZIE**  
Office — Engineering (Upstairs)



**ROY CHEVRIE, JR.**  
Steel Shop Plant



**FRED BISHOP**  
Foundry

**ROBERT GEORGE**  
Steel Shop (Nights)

The Dean of our Sales Force, **C. Benjamin**, Springfield Office, has also proven himself to be the Dean of the "Trap Shooters" for proof ask **E. Gibson**, Sales. (F.D.)

Our new Mail Girl is **Norma Boldt**, sister of **Mary Ann** in Engineering. Norma lives with her mother and family at 108 West Sixth Street, Mishawaka, Indiana. (F.D.)

**Ed O'Dea**, Stationary Stores, who is leaving us will return to his home city of Williamsport, Pennsylvania after he receives his B.S. Degree in Business Administration at Notre Dame. Good Luck, Ed. (F.D.)

**Dottie Whitner**, Engineering, says it is the first of May for sure, because descendants of the Baltimore Oriole family, who spend their summers in the Maple tree in her back yard have returned by May 1 as they have for approximately the last 15 years. (F.D.)

We are happy **Mary Ann Boldt**,

Engineering, convalesced so quickly and is back at work. Our best wishes for continued good health. (F.D.)

New faces in Purchasing; **Carol Ann Radican**, who lives with her husband, **Jack** at 1801 1/4 Marine Street, South Bend and **Beverly Hamley**, who lives with her husband, **Don**, and daughter **Dale Elaine**, at 225 Elder Street, Mishawaka. (F.D.)

The Julianna Club had a Card Party on May 22 at the Knights of Columbus Home. Co-Chairmen were **Jean Spear** and **Betty Sprague**. Chairman of the Committees were — Refreshments, **Alberta Kaufman**; Tickets, **Virginia Heineman**; Publicity, **Fat Plasschaert**; Table Prizes, **Del Brambert**; Raffle Tickets, **Ruth Fuller** and Door Prizes, **Del Canarecci**. (F.D.)

**Don Swardson**, Abrasive Engineer in our St. Louis Office, is an active member of the St. Louis Area Chapter of Sports Car Club of America. He is the Secretary-Treasurer of that club, and served as Registrar for one of their races recently. (M.M.)

**Dale Reddricks**, Erection Engineer, has a new baby girl, **Deborah Kay**, born April 29. This makes two girls and a boy now. (M.M.)

**Fred Baldauf**, Sales, now has a license for a "ham" radio station. (M.M.)

**Alma** and **Ed Huemmer** (Ed's our Paymaster, of course) have a new baby boy, **Joseph Edward**, born April 15. Their other boy, **Jimmy (James Thomas)** is now 18 months old. (M.M.)

**Virginia "Ginny" Golha**, Parts Service, and **Dick Van Daele**, Dust & Fume, have announced their engagement, and **Ginny** has a beautiful diamond ring to prove it, too. Incidentally, never shy women can't keep a secret. **Ginny** had the ring three whole days before she told anybody at work about it. (M.M.)

**LCDR R. E. Gibson**, Sales, recently returned from two weeks of Naval Reserve duty. (M.M.)

**LI. Mason Atkins**, Sales, has also been on two weeks of active sea duty,

on a destroyer tender. Incidentally, we heard that **Mason** tried out his new wrist watch while at sea. It seems he received a new **Benrus** watch from his family for his birthday. It was supposed to be a secret, but their boy (**Jimmy**) couldn't keep still . . . he told him he was getting a new watch. Well, **Mason** was curious to know whether or not the watch was waterproof and shockproof, etc., as it was supposed to be, so we heard he was definitely putting it through some underwater tests. We don't really believe he put on a diving suit, though. (M.M.)

**R. T. Pring** and **Fred Lindahl**, Dust & Fume, journeyed to St. Louis, Missouri, on April 25, where **Mr. Pring** was co-chairman of one of the sessions of American Industrial Hygiene As-

## Wheelabrator Folks on the Job



**LAWRENCE BASSIER**, Maintenance, came to work here May 29, 1951. He had been employed previously by Northern Indiana Public Service Company. Besides general maintenance work, **Larry** serves as plant fireman, a duty he was performing when we got this picture. He is married and has two children. **Larry** says his hobbies are fishing, hunting and gardening.

sociation, and Fred gave a talk on "Control of Air Pollution from Electric Steel Melting Furnace Operations." This was the 1957 Industrial Health Conference. (M.M.)

**Junia Young, Statistics, and Del Casarez, Sales,** had a sad experience the other noon. They went all the way downtown and it seems Junia lost a heel off her shoe. Fortunately, she had a spare pair of shoes in her locker to flush out the day with. (M.M.)

All the salesman and district managers were at Michawake for a sales meeting the first week in May. Mr. R. L. Orth was M.C. A series of talks and lectures was given, by various members of our organization. Of course, this was "Old Home Week" for everyone, and the men in the field enjoyed meeting the new people in the home office, and vice-versa. (M.M.)

We had several happy people the other day, after they had been to the Exchange Club card party and won some door prizes. **Onalee Heles** was the luckiest one — she won a case of beer. **Mary Helen Orver** won a potted rose plant. **Jean Yergon** won a flash camera outfit. **Carol Boebnle** won a \$10 gift certificate from McLaughlin's Paint Store. **Heleen and Rex LaDow** won a portable grill and an electric wall clock. (M.M.)

**Jim Jefferies** has been elected to act as Union Steward on the day shift in Plant 2. (R.C.)

Plant 2 has organized its own softball team and is entering the factory league. Good luck, fellows! (R.C.)

**Virgil Epperson** was telling the boys about the big Pike he lost at Eagle Point recently. He says that the fish was 34 inches long and weighed 26 lbs. Any comments, fellows? (R.C.)

*"If we work upon marble, it will perish; if we work upon brass, time will efface it; if we rear temples, they will crumble into dust; but if we work upon immortal minds, if we imbue them with principles, with the just fear of God and love our fellow man, we engrave on those tablets something that will brighten to all eternity."*  
— DANIEL WEBSTER (M.G.)

**Don Zents** checked out a short time ago. He is now operating his own truck tractor. (M.G.)

Among those who are rich enough to buy new automobiles are **Wilbur Boyce** and **Bob Becker**. (M.G.)

**Kimberly Kay Beery** was very hap-

pily greeted by her parents, Mr. and Mrs. Alvin Beery on April 11 in Bremon Community Hospital. At greeting time, the weight was 6 lbs.-15 oz. (M.G.)

As many of you know by now, **Charley Krause** passed to the Great Beyond on April 22. Charley came to Wheelabrator in 1942. He held various jobs during his association here, the last one being an Assembly. Charley was quite a big fellow, weighing at one time more than 300 lbs. He returned about a year ago after several years illness. He was a member of South Bend Lodge 204 F. & A.M. and at one time Tall Cedars of Lebanon. (M.G.)

*"We often dislike people, not for what they are, but for what we are."*  
— ANONYMOUS (M.G.)

**James Beck, Makeup,** has been studying for the ministry at Midwest School of Evangelism at Ottumwa, Iowa, and graduated May 6. He had been getting in some practice by conducting short services at lunch time. James has four children. (M.G.)

**Vern Hunter** is back after recovering from an auto accident. (M.G.)

**Claudette Jean,** weighing 7 lbs.-5 oz. was born to Mr. and Mrs. **Matt Ballin** on May 1, 1957, in Elkhart General Hospital. Matt works in the Machine Shop and Velda formerly worked in the Production office. Our congratulations to the proud and happy family. (F.B.)

This will end off the Bowling news for the Women's League for this year. We feel so proud of ourselves that we thought you might like to know just how we ended up for the season. We usually end up in last place but this year thanks to the team we finished in third place and also second high in three game series and second in team high single game. Thanks to the members of the team for their wonderful cooperation for the season. We closed

the season by attending the League Bowling Dinner held at Nabicht's on L.W.W. in South Bend on Tuesday, April 30. A good time was had by all. Thanks to the Athletic Association for sponsoring us. We hope to do better yet this coming season. (H.B.)

**Paul Joseph,** weighing 7 lbs.-4 oz. was born to Mr. and Mrs. **Joseph Jeyes** in St. Joseph Hospital in South Bend on May 1, 1957. Joe works in the Machine Shop. Congratulations to the proud and happy parents. (H.B.)

## GIVE THEM A CHANCE

You help give handicapped people a chance — not charity — when you give repairable clothing and household needs to Goodwill Industries. If you call Atlantic 7-6591, a truck will call at your home and pick up your discarded goods. At Goodwill some 60 handicapped people are employed repairing these items in the plant at 316 South Chapin Street. The goods are then sold through their own retail outlet. This operation provides employment, vocational training, rehabilitation services for many who otherwise would not have a chance.

Testimony of the value of Goodwill Industries at a rehabilitation center are the dozens of former employees now working in local business and industry. Income from the sale of repaired items provides 85 per cent of the money needed to support the important program at Goodwill Industries. You help provide the rest through your gift to the United Fund of St. Joseph County.

## From Detailer to Design Engineer

**We  
Knew  
Him  
When**

### CARL FRIEDRICH

**Carl Friedrich, Engineering,** has been with the Company since September, 1939. He had formerly worked for Whitcomb & Keller Realtors. Carl started here as Detail Draftsman. In 1945 he was advanced to Design Engineer. Carl works largely on designing special equipment.



## FUTURE SECRETARIES PAY A VISIT

The Company played host recently to a group of students from Madison Township High School. This (as the Secretaries) Training Class, tutored by Mrs. Irene Arndt who accompanied them here. The 16 young people were divided into two groups before passing through the various offices, conducted by Ray Steele and Ed Hsemmer. Our Company is always happy to cooperate in such projects which allow young students to get a "preview" of what they probably will be doing in later life.

This picture was taken in the lobby just prior to the tour.



## IT TAKES "HUMAN ENGINEERING"

When Walter Nelson, District Service Engineer in the Houston, Texas territory, was in the office recently we discussed problems of Wheelabrator field men. He told of an experience which should interest not only sales and service men, but all of us.

Walt says: "With most people it is quite easy to maintain healthy customer relations. Unfortunately we have to deal also with the other type, with whom it is just as necessary to maintain good relations, even though it is extremely difficult. However, it gives me a great satisfaction, when I meet one of these arrogant individuals, to win him over to my side by a bit of 'human engineering.'"

### Relates Experience

"On one occasion I was called in to help a customer on a Wheelabrator which had just been put back into use. Our services had been offered previously, but the man in charge of rebuilding the machine informed his management that a representative from Wheelabrator would be quite unnecessary. After two or three weeks of trying to operate the equipment, they were in such trouble they had to call for help. After being introduced to the man responsible for getting the machine into production, the conversation went as follows:

**Maint. Sup.:** 'I want you to come out to the plant to see if you can do anything with this old machine. I can't do anything with it. It eats itself up as fast as I can replace parts.

**Myself:** 'I'm sorry to hear that — we naturally expect to have some wear, but usually this can be controlled.

**Maint. Sup.:** 'You know what — we get less than 8 hours wear on the guards — and these new ones put on three weeks ago have holes blasted in them. We just can't put up with it. It would be cheaper to use pickling or some other way.

**Myself:** 'As we continued to walk quite a distance to the cleaning department (Possibly we will find some way of reducing this excessive wear—we do make a fine line of Long-Lyfe Parts, which I'll be happy to tell you about.

**Maint. Sup.:** 'I know you do — that's what I thought I was ordering. That catalog of yours would confuse anybody. I ordered the number in the first column, as it compared with the number in our service book, and what did I get? Mild steel liners, soft as butter.

**Myself:** 'Well, you see, the Long-Lyfe catalog is so arranged that you can easily find the part number adjacent to the number listed in your service book. I'll show you later what I mean. (Wear-

rived at machine.) If you will get your mechanic to remove the guard covers, we'll try to find your trouble — from what you've told me something has to be abnormal.

**Main. Sup.:** 'O.K., but we're pretty careful about these things. John, take off the guard covers.'

**Myself:** 'Look here, Mr. \_\_\_\_\_ the openings in the control cages have to be properly located so the shot will be delivered on your material in the cabinet. One of the cages is directly opposite from where it should be, and the other is turned about 20° too far. (At this point I noticed there was no wear on the face of the blades, but the back of the blades were worn.'

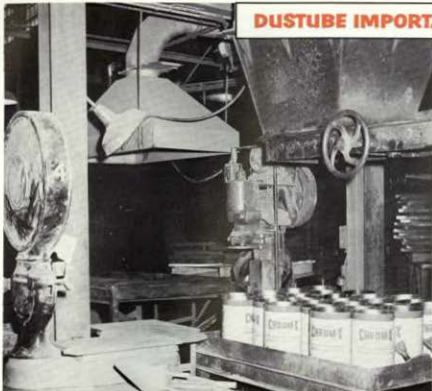
### Happy Ending

In bringing the story to a close, Walt adds: "I found that both wheels were turning backwards, the belts were loose, there was a gate missing on the ventilation piping which caused the shot to be pulled over into the Dust Collector. The flexible tube and dribble valve were missing from the separator. We went about making the corrections.

"Can you imagine this man's embarrassment when he realized what he had done? But as any good Wheelabrator man would do, I tried not to take advantage of his predicament by 'getting even' for his rudeness. Before I left, his attitude was entirely changed. He thanked me for the information and help I had given, and assured me that I would be welcome whenever and under whatever circumstances I chose to call."



## DUSTUBE IMPORTANT IN MINING FIELD



At Chromium Mining & Smelting Corporation, Chicago, nearly every operation involves a great amount of dust. Our Dustube has replaced the equipment of a competitor which not only allowed dust to cover the plant area, but to permeate the entire neighborhood. Working and living conditions are now immensely improved. Valuable materials are also salvaged for future use.

This company is a processor of various metal silty materials for the steel industry, such as ferro-chrome, ferromanganese and ferro-silicon. Ores are first smelted in other plants belonging to this company, and then brought to the Chicago location where they are crushed, mixed and packaged for sale. Involved are such steps as crushing, screening, conveying, weighing, drying and container filling.

The Dustube is a 3-compartment machine. One compartment ventilates raw materials and the other two take care of the mixed material. Approximately 120 tons of material passes through the system daily.

• One view of can-filling station ventilated by Dustube Collector.

### Wheelabrator Folks on the Job



ALVA BRICKER, Steel Shop (Nights), has been here since May, 1937. Before coming here he worked for Sandvik and Saylor Corporations. He works on setup and welding of Dorr-Row parts. Alva is married and has six children. He says his spare time is devoted to his small farm—also being in Minnouda, Wisconsin and Michigan. Alva is a member of United Methodist Church.

## *a letter of appreciation*

The following letter, referring to the untimely passing of a former employee, Charles Krause, was received by Ray Steele, Director of Personnel.

Dear Sirs:

We wish to express our appreciation to all employees and officers of Wheelabrator Corporation for their kind expressions of sympathy. The prompt and kind consideration of Mr. Steele and Mr. Whittaker relieved us of many details in our time of sorrow. It is deeply appreciated and gratefully acknowledged.

Sincerely,

Mrs. Chas. E. Krause  
and son, Maurice



## GOING STRONG SINCE 1923!

This picture was taken in the plant of Fundacion Pujol, Havana, Cuba. We wonder what memories are aroused among a few of you at seeing this genuine "veteran" of the foundry business. The caption on the photo as we received it reads like this: This is a No. 601 American Moulding Machine still working since 1923, and made by American Foundry Equipment Company, when the firm was in York, Pennsylvania. Right to left are: Mr. Juan Pujol, 81 year old owner of the Cuban foundry; Bob Riordan, Wheelabrator Export Manager; Wheelabrator Representative in Havana; Mr. Ramon Cal, Works Manager; Mr. Ricardo Arenzibia, Mechanic Conservation Man.



## CHIEFS - BRAVES TAKE PART IN RACE

The Y.M.C.A. gymnasium in South Bend was the scene of much fun and excitement recently for several Wheelabrator fathers and their sons. The occasion was the 10th Annual Father-Son Y-Indian Guide Males Box Derby, in which there were approximately 100 entries. These miniature cars were for the most part constructed by the youngsters. Acting as starter for the dash down the ramp was Mayor Voorde of South Bend. Harold Schulte's son, Freddy, placed second in the event.

Being unable to "cover" the big

race, your editor did the next best thing by gathering the Chiefs and Braves together in the home of **Bud Hornbeck**. The five Wheelabrator fathers whose youngsters participated in the race are (left to right): **Harold Schulte, Engineering; Bud Hornbeck, Time Study; Hubert Davidson, Engineering; Donald Schrader, Engineering; Robert Newsom, Machine Shop.**

In front are the youngsters with their entries. Left to right are: **Freddy Schulte, Mike Hornbeck, Pat Hornbeck, Billy Davidson, David Schrader and Laurens Newsom.**



Left to right — Lloyd and Joe.

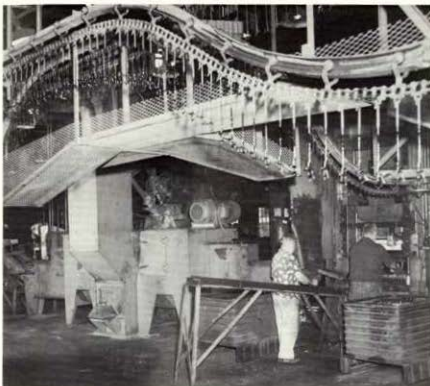
## WHEELABRATOR PAIR FROM TENNESSEE

This concerns another of the many brother teams working for Wheelabrator Corporation — **Lloyd and Joe Jernigan**. Lloyd works in the Steel Shop and Joe in Plant 2.

Lloyd Jernigan came on the job in March, 1951. He had worked previously for Cherokee Bus Company, Winchester, Tennessee, He says, "I came north hunting for work . . . and am sure glad I found this place." Lloyd is an assembler. He states that his outside interests are TV and doing any kind of mechanical work. Lloyd is married and has a nice family of nine — seven boys and two girls.

Joe Jernigan's job is boxing Steel Shot in Plant 2. He joined the Company in May, 1951. He had formerly been employed by a milk plant in Tennessee. Joe says he came to Mishawaka "to join the rest of the family." He is married and has three children. Joe's outside activities are confined largely to hunting.

Lloyd and Joe have a brother-in-law working for the Company. He is **Lamar Dotson** of Plant 2.



## THEY HANDLE 3,000 SHARES IN 8 HOURS

We are not referring here to shares of stock, but plow shares. The Oliver Corporation of South Bend is able to turn out this volume of work with a 2-Wheel Special Cabinet. Fifteen different sizes of shares are run in this machine, which cleans them after heat treatment and drawing.

The Wheelabrator is an integral part of Oliver's continuous processing line. Shares are carried to the Wheelabrator on a conveyor, and then passed through the machine continuously and automatically on to further production. No operators are required.

### Results

Whereas it had formerly been necessary to grind and polish all shares to obtain the desired surface needed to turn over earth during plowing operations, the uniform matte surface imparted to the shares by the Wheelabrator has eliminated most of the manual steps. It has been proved that earth scours over a Wheelabrated share much better than from a highly polished surface. This is particularly true on heavy, damp soil which has a tendency to stick to a polished share.

## ••••• WHITE DOTS ON THE GREEN •••••



Wheelabrator men were swinging and golf balls were soaring and bouncing at Elberhart Golf Course on Monday evening, April 23. This was the beginning of competition in the Wheelabrator Golf League for 1957.

Twenty-six 2-man teams have entered thus far, the largest number in the history of the league. All matches are being played immediately after 5 P. M. on Mondays. Second shift employees will play on Mondays before coming to work. All matches will be 9-hole contests, with each team playing the front nine one week and the back nine the week following.

Officers of the league are: Tom Hamelje, President; Jim Evans, Vice-President; Bud Hornberk, Secretary.

Pictured here are several of our contestants in action.



## NEW FACES

Wallace Nellist, Advertising; Janet Marker, Sales; John Meras, Engineering; Beverly Handley, Purchasing; Helen Shanklin, Accounting; Carol Radfran, Purchasing; James Varda, Dust & Fume; Norma Boldt, Mail Room; Joseph Kelly, Wayne Hungeate, Sales; Julie Fusco, (Part Time) Accounting.

Charles Burns, Maid (Part Time); John Pittman, Pattern Shop; Richard Fuszta, Ronald Middy, Foundry; Joseph Furore, Metallurgical; Eugene Van Paemel, Production; Richard Mrosinski, Foundry; Bland Jackson, Foundry; Patrick Ross, Charles Metzger, Machine Shop.



## A TIME OF PREVIEW AND REVIEW



Discussing the heavy duty chain links for our Super Tumbler are, left to right: Davis Taylor, District Manager, San Francisco; Harold Miller, Vice President; Charles Bonham, District Manager, Springfield, Massachusetts; Joe Thompson, District Manager, Milwaukee; Jack Swartz, District Sales Engineer, Detroit.

There was added activity in and about the Sales Department during the week of April 29 to May 3 when our field sales force of 36 men from 20 offices throughout the United States and Canada convened for the annual Sales School. Welcoming the group were Bud Rich, General Sales Manager, and Bob Orth, Field Sales Manager. Objectives of the meeting were to appraise the markets in which the Company is already operating, to discuss potential new markets, and to cover the technical aspects of new machines and applications.

Some of the more important developments of Wheelabrator blast cleaning equipment discussed were the increased demand of the steel producing industry (or mechanical descaling of such items as steel strip, sheet, wire and rod, ingot molds, skelp, etc.

There was also a full report on the first year's industry-wide acceptance of the Super Tumbler. There was a detailed discussion of the many installations of this revolutionary machine.

During the week several sessions were devoted to the importance of market and application research. Included in these meetings was a review of important new markets and the type of equipment developed for these applications.

## WHEELABRATOR SHOWS AT CONRAD HILTON

The Company participated in the 26th Annual Convention of the Liquefied Petroleum Gas Association held May 12-15 at the Conrad Hilton Hotel, Chicago. More than 120 manufacturers displayed their equipment and products. Nearly 4,000 persons attended the show which presented a full array of machines and appliances produced for the storage, transportation and utilization of butane and propane gas.

This show afforded Wheelabrator Sales Engineers an opportunity to discuss with the proper people the importance of our equipment in the field of gas cylinder cleaning and reconditioning. There is an ever-expanding market for special Wheelabrator equipment which not only makes it possible for the owner of such cylinders to furnish an attractive unit for his customer, but to effect a great savings due to a longer life for the gas cylinder.

Members of our Chicago Office were in attendance at the booth.

